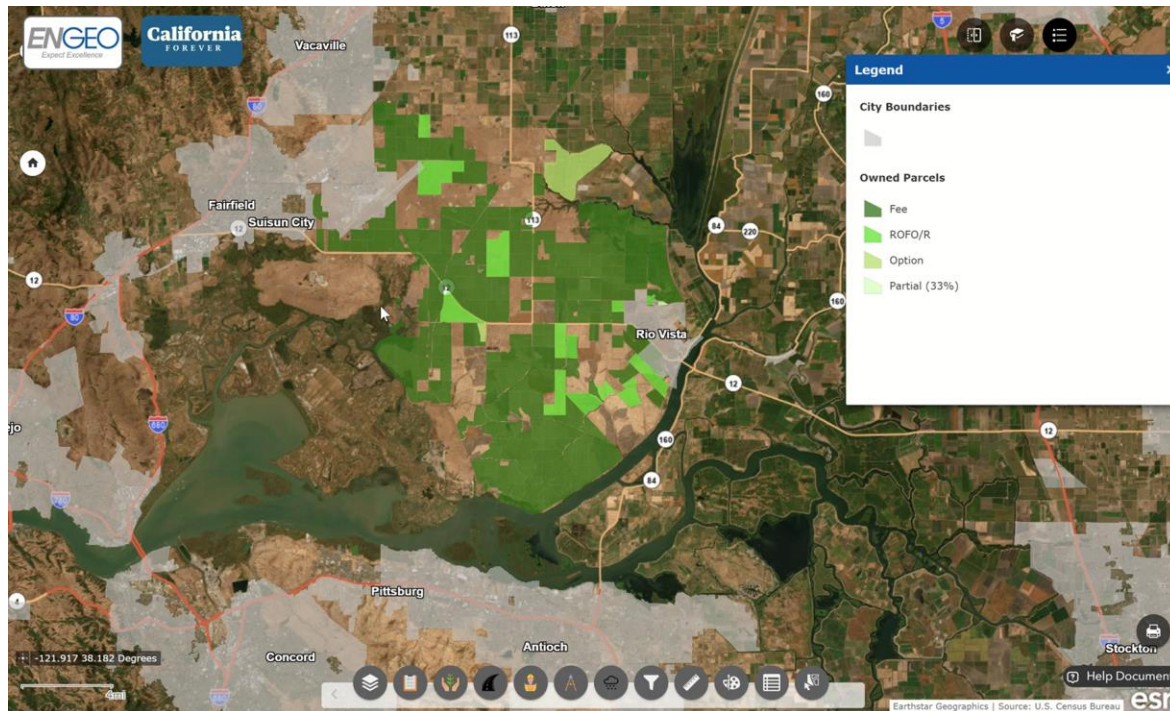


Zoom Issue Fix

Unintentional level of zooming/out when using touch pad due to smooth scrolling



Background of the issue

Smooth scrolling will gradually stop the scrolling when using a touch pad after the “scrolling” action is stopped. This leads to an increased zoom in/out level than the intended input.

1. For Chrome and Edge

Open a new tab and type :
chrome://flags/#smooth-scrolling
or **edge://flags/#smooth-scrolling**
in the address bar and press Enter.

Click *Relaunch/Restart* on the bottom-right corner.

Chrome/Edge will restart and open any pages that were previously open.

* See image on next page

Search flags Reset all

- Smooth Scrolling**
Animate smoothly when scrolling page content. – Windows, Linux, Android
[#smooth-scrolling](#)

Disabled ▾
- Temporarily unexpire M115 flags.**
Temporarily unexpire flags that expired as of M115. These flags will be removed soon. – Mac, Windows, Linux, Android
[#temporary-unexpire-flags-m115](#)

Default ▾
- Temporarily unexpire M116 flags.**
Temporarily unexpire flags that expired as of M116. These flags will be removed soon. – Mac, Windows, Linux, Android
[#temporary-unexpire-flags-m116](#)

Default ▾
- Override software rendering list**
Overrides the built-in software rendering list and enables GPU-acceleration on unsupported system configurations. – Mac, Windows, Linux, Android
[#ignore-gpu-blocklist](#)

Disabled ▾
- Accelerated 2D canvas**
Enables the use of the GPU to perform 2d canvas rendering instead of using software rendering. – Mac, Windows, Linux, Android
[#disable-accelerated-2d-canvas](#)

Enabled ▾
- Partial swap**
Sets partial swap behavior. – Mac, Windows, Linux, Android
[#ui-disable-partial-swap](#)

Enabled ▾
- WebRTC downmix capture audio method.**
Override the method that the Audio Processing Module in WebRTC uses to downmix the captured audio to mono (when needed) during a real-time call. This flag is experimental and may be removed at any time. – Mac, Windows, Linux
[#enable-webrtc-apm-downmix-capture-audio-method](#)

Default ▾
- Anonymize local IPs exposed by WebRTC.**

Default ▾

Changes will take effect after you restart Microsoft Edge.

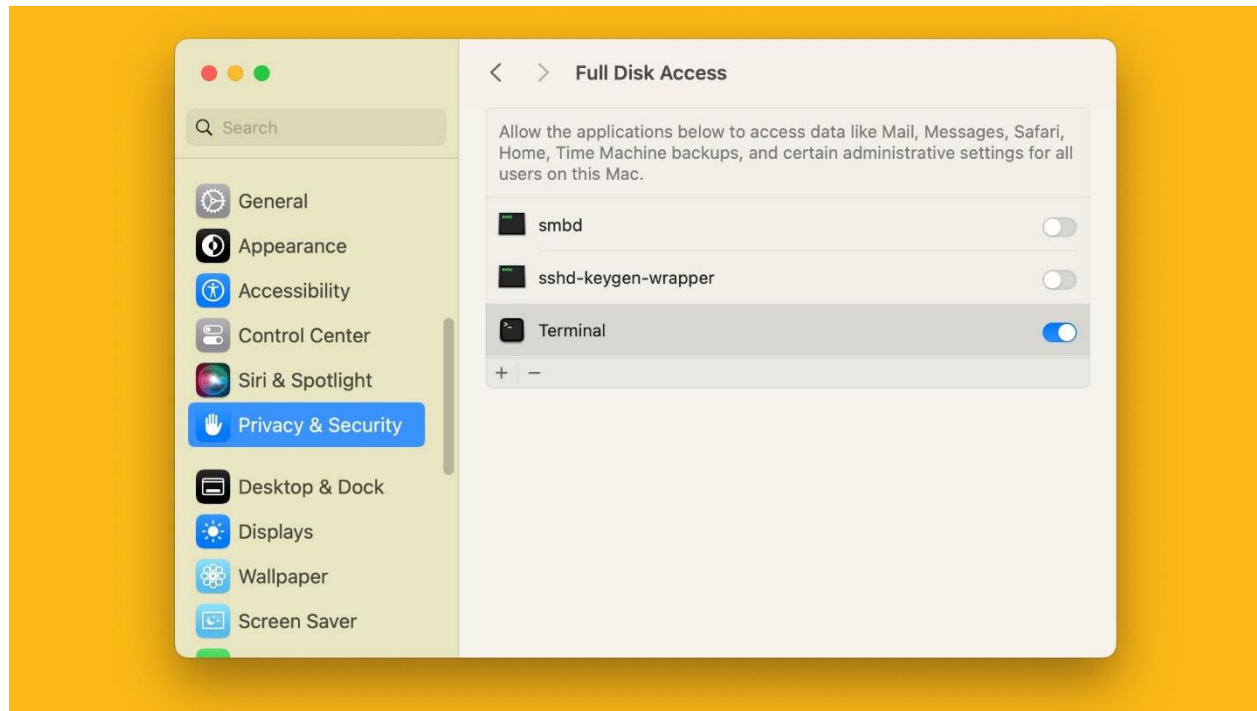
Restart

2. For Safari on Mac

To stop smooth scrolling behavior in Safari, you must toggle an option in Safari's hidden Debug menu.

You can do so through Terminal, but you'll need to give the Terminal app permission to access the whole file system on your Mac.

- Click the **Apple** menu and select **System Settings**, then select **Privacy & Security** in the sidebar and click **Full Disk Access** on the right.
- Next, slide the switch next to **Terminal** to the ON position.
 - If Terminal isn't listed, click the + (**Add**) icon, navigate to the **Applications/Utilities** folder on your Mac and double click the **Terminal** app.
- If asked, authenticate with Touch ID, your macOS password or your Apple Watch.

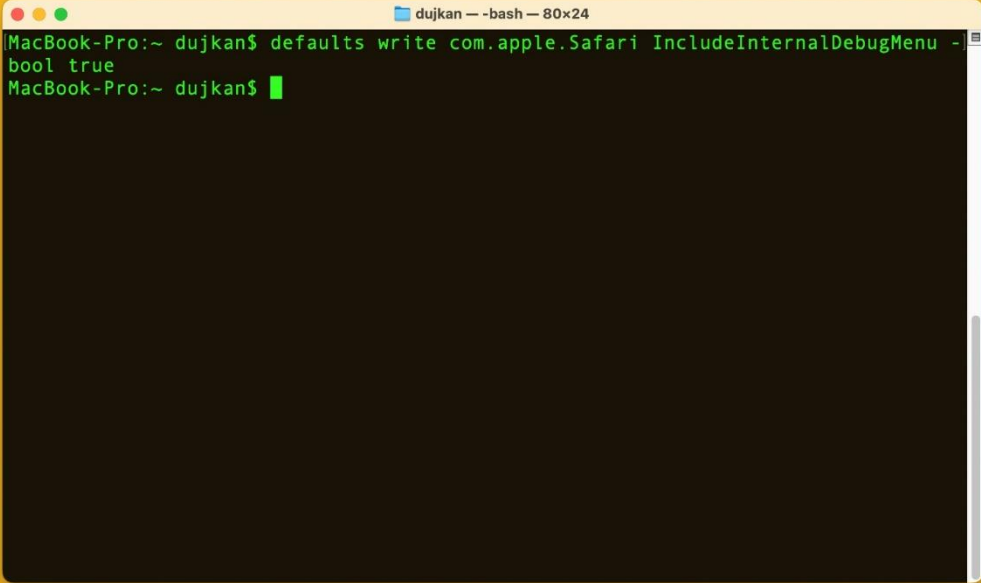


Reveal Safari's hidden Debug menu

With access to **Terminal**, we can now turn on Safari's hidden Debug menu. Open **Terminal** from the **Applications/Utilities** folder, paste the following command into the Terminal window and press Return or Enter to execute it:

```
defaults write com.apple.Safari IncludeInternalDebugMenu -bool true
```

With the Debug menu turned on in Safari, we can proceed to the final step.

A screenshot of a macOS Terminal window. The window title is "dujkan -- bash -- 80x24". The terminal text shows the command "defaults write com.apple.Safari IncludeInternalDebugMenu -bool true" being entered and executed. The prompt "MacBook-Pro:~ dujan\$" is visible before and after the command. A green cursor is positioned at the end of the second prompt line.

```
MacBook-Pro:~ dujan$ defaults write com.apple.Safari IncludeInternalDebugMenu -bool true
MacBook-Pro:~ dujan$ █
```

Turn smooth scrolling off

Open **Safari**, click the **Debug** menu in the top left and select **WebKit Internal Features > EventHandler driven smooth keyboard scrolling**.

Doing so should remove the checkmark from the option, deactivating smooth scrolling.

With smooth scrolling disabled, pressing an arrow key on the keyboard will no longer scroll a page continuously until you release the key. Instead, the page will move one line at a time.

*See image on next page

| | |
|---|---|
| Disable Per-Tab Web Processes | @page CSS at-rule support |
| Get Bytecode Profile | Accelerated Filter Rendering |
| Save Sampling Profiler Output | Additional Testing APIs for DOM Objects |
| Show Resource Usage Overlay | Alternate WebM Player |
| Start Memory Sampler | App Badge |
| Start Stress Test | ✓ App Highlights |
| Start Watchdog Timer | ✓ Async Frame Scrolling |
| Suppress Alerts | ✓ Async Overflow Scrolling |
| Force Repaint ⌘ ⌘ P | Built-In Web Notifications |
| Drawing/Compositing Flags > | CSS Spring Animations |
| Media Flags > | CSS text-decoration-position: left right |
| Debug Overlays > | Canvas Filters |
| Layout Flags > | Capture audio in UI Process |
| Miscellaneous Flags > | Capture video in UI Process |
| WebKit Internal Features > | Client Badge |
| Crash Web Process | Compositing borders visible |
| Pause Web Process | Compositing repaint counters visible |
| Go to about:blank Soon | ContentKeySession support for SampleBuffer Renderers |
| Start Automation Session | Cookie Consent API |
| Create New Automation Window | ✓ DOM Paste Access Requests |
| Siri Start Page > | DisplayList Drawing |
| Recompute Top Sites | ✓ Drop Near-Suspended Assertion After Delay |
| Reset Top Sites | Enable Automatic Live Resize |
| Extensions > | Enable Enumerating All Network Interfaces |
| Sync iCloud History | Enable Enumerating Visible Network Interfaces |
| Start Migrating Bookmarks to CloudKit | ✓ Enable ICE Candidate Filtering |
| Enable CloudKit Bug Notifications | Enable Mock Capture Devices |
| FastSync Presence Enabled > | ✓ Enable background web content throttling via RunningBoard |
| Record User Session | Enable experimental sandbox features |
| Save Page Inlining or Discarding External Resources | ✓ Enable strict decoding of all ObjC classes |
| Save AutoFill Metadata for Active Form ⌘ ⌘ | ✓ Enter Key Hint |
| | EventHandler driven smooth keyboard scrolling |
| | ✓ Experimental MediaSource Inline Painting |
| | Experimental network loader |
| | ✓ Filter HTTP Response for Web Processes |
| | Full next-generation layout (LFC) |
| | ✓ GPU Process: Audio Capture |